

The Kisselgraph

JANUARY 1986

Official Publication of the Kissel Kar Klub

P. O. Box 305, Hartford, WI 53027

1985 CAR SHOW/ANNUAL KISSEL MEETING

Artical and pictures submitted by: Charles Cummings

For those who didn't attend the Fifth Annual Old Car Show and Swap Meet on August 17 and 18, 1985, at Hartford, Wisconsin, the following is a brief report.

This second-largest meet in Wisconsin was estimated to have attracted 1,800 vehicles and 13,000 spectators. Filling 140 acres of Miles Field, the Hartford Municipal Airport, were areas for showing, swap meet, and the second yearly, day-long, active Saturday auction. Hourly bus service brought visitors from Hartford's center, some two miles away.

Friday's Hartford Times Press devoted 12 pages to Kissel memorabilia and meet information, extra copies are available for \$1.00 each. A \$2.50 souvenir button illustrating a 1923 Kissel Brougham Sedan, owned by Schuette/Wolbrink of Hartford, bought entry and re-entry both days. A 1931 Stinson trimotor airplane and 2 smaller single-engine planes provided aerial views of the event for a fee. Dash plaques went to the first 400 pre-registered car owners appearing. A special drawing each day awarded six commemorative plaques for vehicles picked at random.

A Kissel Kar made in the 1918 model year before the shortening of the name in June, and other Kissels to 1926 were displayed inside one hangar. The other vehicles, parked in neat rows outside, ranged from brass-radiator vintage to modern stock and custom designs. In vendors' 10- by 30-foot spaces in the swap meet, were examples, for instance, of 1914 literature, many 1940 to 1970 car and truck parts and accessories, toys, street-rod parts and other typical flea market articles. A local radio station, WTKM, broadcast from the show most of both days, periodically interviewing show participants. Channel 4 television also covered Saturday's events.

Saturday afternoon, the Wisconsin Society of Automotive Historians heard Eugene Husting relate Kissel History. He traced the industrial career of the Kissel family and the development of the firm into an off-shoot for automobile production in 1906 up to the disposal of assets and the factory site to West Bend Aluminum Company in 1944 by Kissel Industries, the car company's successor. Still under management of the Kissel family, it found a niche in the outboard motor field after some false starts, and made torpedo

1985 CAR SHOW/ANNUAL KISSEL MEETING

parts under subcontract during WWII. He said fewer than 200 Kissels survive in various stages of restoration around the world.

NEW MUSEUM OPERATION

As you all have been informed approximately 6 to 8 months ago, Hartford Heritage, Inc., now has a facility suitable for the old car and industrial museum in Hartford, Wisconsin.

We have been in the process of renovation of the building. We have received modine heaters to supply the heat for the museum area, and the next step of course is lighting, painting, and so forth. At this point in time all the painting has been completed. Within the next 3 to 4 months all of the renovation should be completed. We are anticipating a Grand Opening of June 1986. To obtain this renovation money, we have entered into a loan agreement with the Federal Government that provides us with \$80,000 dollars over a twenty year loan agreement at 5% interest. These are the funds that will be utilized to develop the first 24,000 square feet of museum space.

As you know the building is considerably larger than that 24,000 square feet and much of the space has been rented out. We have to date rented out 70,000 square feet of space to various Industries for warehouse and two Industries are now located in the building and are fully operational. This provides us with our operating capital. Certainly we are interested in obtaining other Federal monies, foundation grants, and personal donations. We have accepted the money from various Kissel Kar Klub members and various pieces of artifacts and office furniture, etc.

If you want to be a part of the museum projects, please give me a call. The new number for Hartford Heritage, Inc., is area code (414) 673-7999. The mailing address is 147 North Rural Street, P.O. Box 305, Hartford, Wisconsin, 53027.

FULL TIME OPERATION

In October 1985, the Board of Directors of Hartford Heritage saw that we would be able to operate this museum on a full time basis beginning January 1, 1986. As a result of their meeting, Dale W. Anderson was hired as Executive Director for Hartford Heritage, Inc.

As most of you know I have been extremely interested in this project and have obtained the building and I pretty well put the museum project together.

FULL TIME OPERATION

I genuinely appreciate the Board action in hiring me to fulfill the rest of what I view as a dream for the Hartford area.

This change then requires that I will no longer be employed by the Hartford Area Chamber of Commerce or the Hartford Area Development Corporation. I have been replaced by a new Director for that position. Her name is Penny Murn. If you require contact with the Chamber, please give her a call directly.

DONATIONS TO THE MUSEUM

In addition to the list of items from the last newsletter various other pieces have been now donated to the museum project. We have received an unrestored 1965 Corvair Convertible from Mr. Gene Histing, a 1936 White unrestored Fire Engine and a restored John Deere 1937 Model B Farm Tractor along with that Delyle Beyer has donated various pieces of office furniture. We also did receive from another party, a copy machine. However, the machine is not repairable.

We are still looking for a copy machine and a high quality typewriter.

CAR SHOW / MUSEUM SHOW 1986

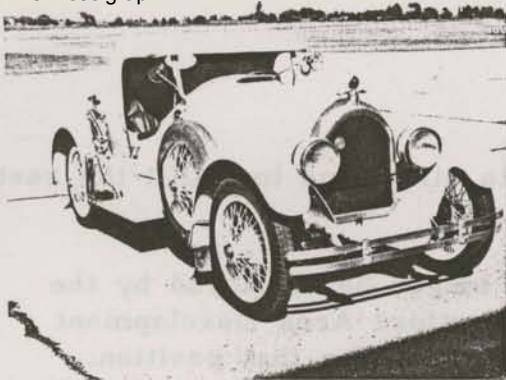
The Car Show is going to be somewhat different in 1986. The Chamber of Commerce will still be operating the show itself. However, the Museum which is under my direction will also have a car show on the grounds.

We would like to invite all of you to be at the Museum during the Car Show, which will display the very expensive, classic, and antique automobiles in addition to our regular displays. All Kissel Car owners are to bring their cars to the Museum. Any of the cars that are brought in for the show will have full indoor protection.

The Chamber Car Show held at the same time will be very similar to what it has been in the past except that we will not have any Kissels in the hanger.

We anticipate that we will have an admission based on one ticket for the Museum and one for the regular Car Show at separate pricing or a combination that would allow you to go to both activities for one price. This is a bit of a change and I think it will pay off for all of us in the long run. More details will be forthcoming as the required decisions are made.

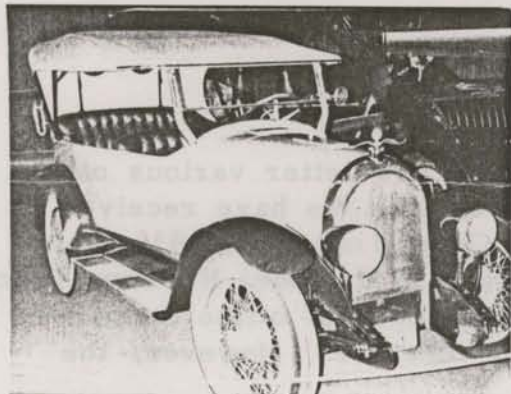
Dale M. Anderson



1924 Kissel Model 6-55 Speedster owned by Ruth and Henry Schwister, Hubertus, Wis



1925 Kissel Enclosed Speedster and 1926 All-Year Coupé Roadster, both Model 6-55, owned by Babe and David Lanning, Big Bend, Wis



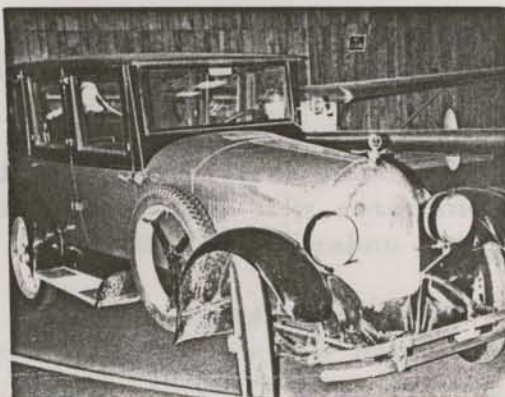
1922 Kissel Model 6-45 7-passenger Touring owned by Chester Krause, Iola, Wis



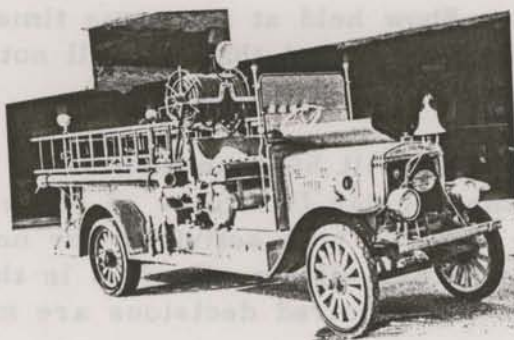
1918 Kissel Kar Model 6-38 Hundred Point Six Roadster owned by Ron Leu, Marshfield, Wis



1923 Kissel Model 6-55 Touring owned by Margaret and Delyle Beyer, Hartford, Wis



1923 Kissel Model 6-55 Brougham Sedan owned by Lyn Schuette and David Wolbrink, Hartford, Wis



1923 Kissel Pumper, owned and restored by the Hartford, Wis Fire Department

Bill W. Johnson